

Crew Transfer Vessel

# OOC NERZ



SPECIFICATIONS

**THE NEW 26M BMT NIGEL GEE DESIGN FOR UP TO 36 PAX**  
**VOLVO QUAD IPS 900 THRUSTERS INCL. DYNAMIC POSITIONING**  
**ACTIVE FENDER SYSTEM**  
**MAXIMUM PASSENGER COMFORT**  
**LOW NOISE AND VIBRATION LEVELS**



**OPIELOK OFFSHORE CARRIERS**

Operators of modern offshore supply vessels





OPIELOK

### MAIN CHARACTERISTICS

Built	2016
Type	Catamaran
Hull and Superstructure	Aluminium
IMO number	9766243
Gross Tonnage	217
Length overall	26.20 m
Breadth	8.90 m
Max. draught	1.75 m
Air draught (@ max. draught)	11.07 m
Depth	3.95 m
Max. speed	27 kn
Service speed	25 kn
Fuel	35,000 Litres
Fresh Water	3,000 Litres

### PASSENGER CAPACITY

Crew	4
Passengers	from 12 up to 36

(subject to flag, flag requirements and area of operations)

### CARGO CAPACITY

Deck area (fwd.)	50 m <sup>2</sup>
Deck area (aft)	27 m <sup>2</sup>
Deck strength	2 t/m <sup>2</sup>
Deadweight	33.5 t
Container slots (fwd.)	2x 10' or 1x 20'
Container slots (aft)	1x 10' or 1x 20'
Deck storage containers	3x 1 m <sup>3</sup>
Tie down points on deck	58 @ 0,25t SWL each

### OPERATIONAL FEATURES

Operating time	24 hrs
Active fender system	BMT Nigel Gee
Fender type	RG Seaside (nib or flat fender)
Crane	up to 6 t SWL
Power sockets fwd. deck	1x 415V, 50Hz, 32A, 4 pin
	1x 220V, 50Hz, 15A, 3 pin
Power sockets aft deck	1x 415V, 50Hz, 32A, 4 pin
	1x 220V, 50Hz, 15A, 3 pin

Sufficient storage areas for tools, equipment and luggage  
 High pressure washer (150 bar; fresh and salt water) incl. 50m hose  
 Fuel Transfer System incl. 40m hose (capacity: 75 l/min @ 40m)  
 Fuel oil metering system for Fuel Transfer System  
 Installation of project specific radio prepared  
 Installation of personnel tracking unit prepared  
 Flat deck design for optimal cargo handling  
 Self-polishing anti-fouling to reduce fuel consumption  
 2x mooring winches  
 2x dive platforms  
 Moon pool

### DANGEROUS GOODS

Vessel is certified to transport dangerous goods and therefore carrying following additional equipment:  
 2 additional fire extinguishers plus 2 spare charges  
 2 additional fire hose outlets and nozzles/hose  
 4 full sets of protective clothing  
 2 sets of breathing apparatus plus 2 spare charges

### CLASSIFICATION

Classification society	Lloyds Register
Classification code	LR # 100A1 SSC, Catamaran, HSC, Workboat, G3, MCH
Flag state	Dutch
Vessel built according to German regulations	
Certified to transport dangerous goods	

### ACCOMMODATION & COMFORT

4x Toilets  
 2x Showers  
 4x Crew cabins (8 bunks)  
 Luxury business class seats (recliners incl. power sockets for PAX)  
 Fully air conditioned incl. de-misting and heating system  
 Full galley  
 Lounge Area  
 Low noise and vibration level (resilient mounted superstructure)  
 TV Flat screens incl. DVD player & Satellite TV system  
 Audio system  
 Wi-Fi  
 Separate changing area  
 PPE storage room  
 PPE wet locker (heated & ventilated)  
 CCTV System incl. digital video recording (DVR)

### ADDITIONAL LIFESAVING EQUIPMENT

Medical equipment incl. MFAG	EPIRB & SART
AED	Helicopter Winching Area
Stretcher (helicopter hoistable)	MOB Recovery Davit & Mate Saver
SeaMarshall MOB Finder	Rescue Areas

### PROPULSION & ENGINES

Propulsion	4x	Volvo Penta IPS 900 Thrusters incl. Dynamic Positioning
Engines	4x	Volvo D13-700 High Speed Diesel
Engine rating	4x	515kW / 700BHP
Generator	2x	Cummins Onan 27 ekW
Trim & Ride Control	2x	2x Humphree HA 1000

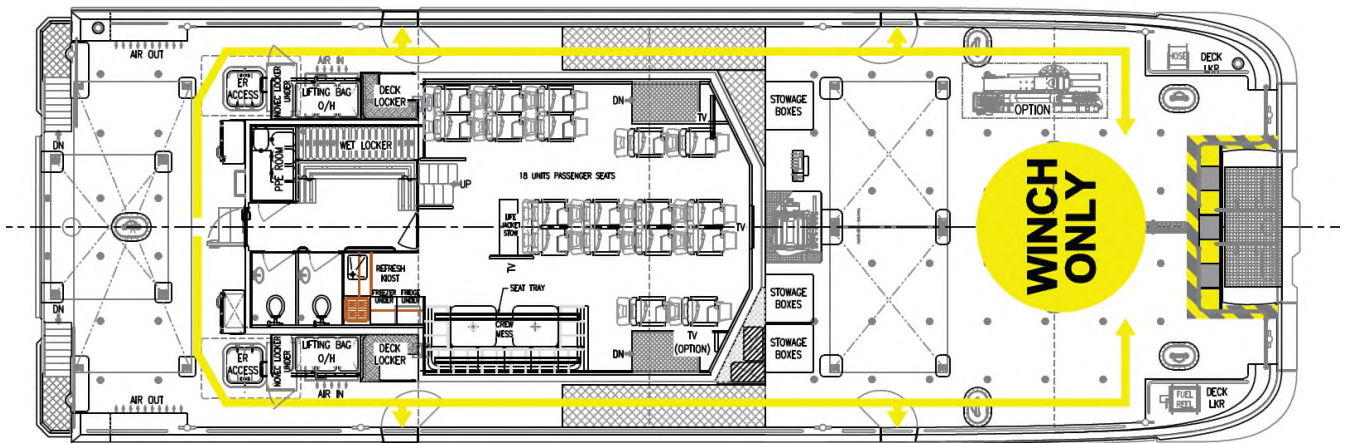
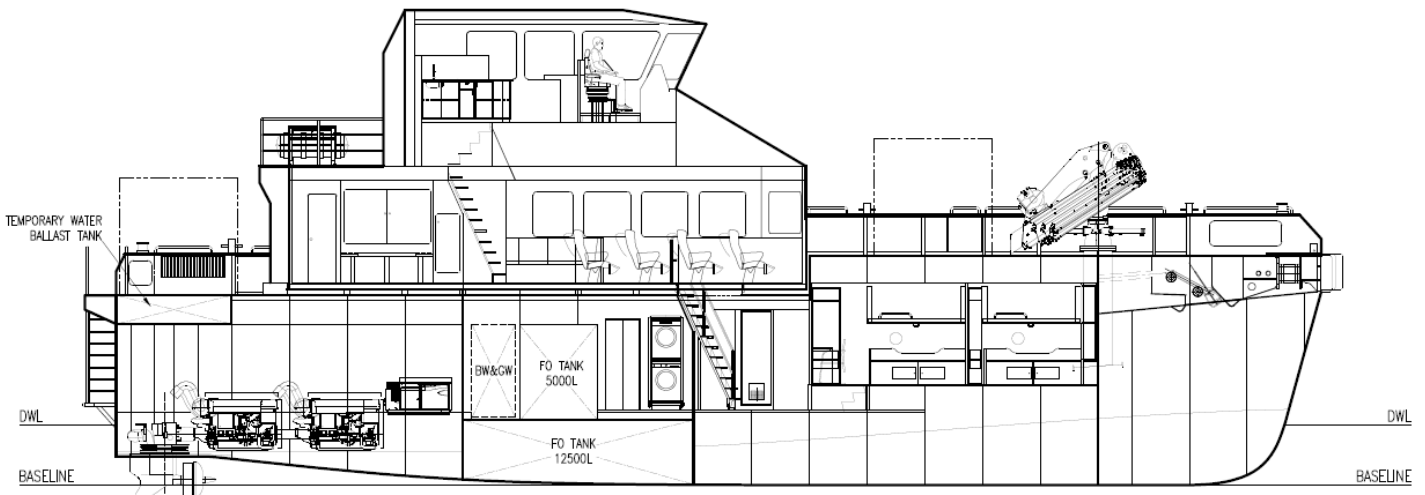
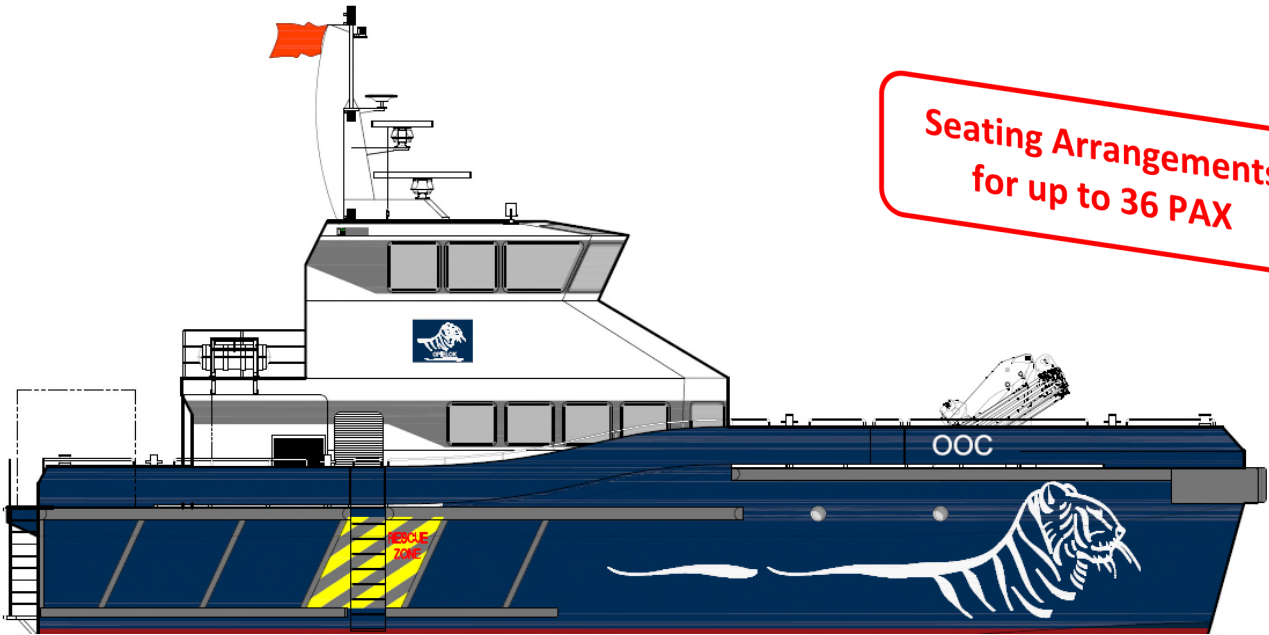
### NAVIGATIONAL EQUIPMENT

2x radar (incl. ARPA) and radar reflectors  
 ECDIS  
 Autopilot  
 Navtex  
 AIS (Class A)  
 GPS  
 3G mobile broadband router  
 Inmarsat FleetBroadband 150  
 Satellite and magnetic compasses  
 Talkback / PA system and loud hailer  
 Speed log  
 Echo sounder  
 Anemometer  
 Horn  
 Flood lights 2x aft deck, 2x fwd. deck, 2x bow area (6x 3000 Lumen)  
 1x remotely operated search light (15 Lux @ 100m)  
 Radios 1x GMDSS MF/HF DSC Radio  
 2x GMDSS VHF DSC Radios  
 1x UHF Radio  
 3x GMDSS VHF Handhelds



OPIELOK

Seating Arrangements  
for up to 36 PAX



OOC OPIELOK OFFSHORE CARRIERS GMBH & CO. KG  
Alstertwiete 3 – 20099 Hamburg – Germany  
Phone +49 40 280 0876 0 Fax +49 40 280 0876 22  
office@opielok.com www.opielok.com





OPIELOK

## SPECIAL FEATURES AT A GLANCE

### VOLVO QUAD IPS 900 DYNAMIC POSITIONING



The new powerful propulsion system incl. 4 IPS thrusters delivering a fuel efficient drivetrain with perfect maneuverability including a joystick operated DP system. That means a great combination of high transfer speeds and exact approaches to offshore structures under harsh conditions.

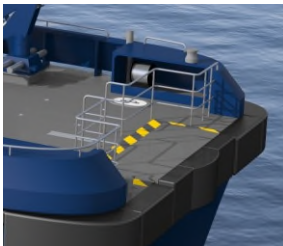


### MAXIMUM COMFORT FOR YOUR PASSENGERS

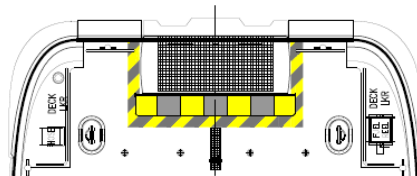
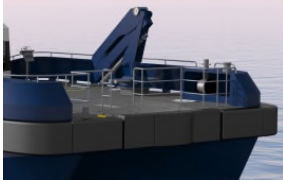
We had a deep look into maximizing passenger comfort as it is essential to have fit and rested personnel for safe and efficient offshore works. Our comfortable business class seats, drying rooms for work wear, low noise and vibration levels in the cabin, air-conditioning, a fully equipped galley and an entertainment system are only a few of the amenities which aim to change our passengers stay onboard from an office commute to a relaxed and comfortable work atmosphere.



### ACTIVE BOW FENDER SYSTEM



The active bow fender system reduces the impact forces to offshore structures and grants our clients a safe and smooth step over from and to offshore structures – even in bad weather conditions. In combination with the IPS propulsion system we aim at maximum uptime.



### CARRYING UP TO 36 PAX

Our vessels are able to transport up to 36 Passengers due to a flexible set-up in the passenger cabin. Carrying more passengers will – in addition to the fuel savings – further reduce our clients' transport costs per PAX instead of hiring more vessels for the same amount of PAX.

### 24HRS OPERATION

Our vessels are built to work 24hrs and stay offshore for days due to having 8 bunks on board and an expanded consumables capacity. Therefore we can fully support all our clients' offshore campaigns by being independent from other vessels and offshore structures.

### CARGO & CONTAINERS

The vessel can carry 10' and 20' containers on deck. The flat deck design is optimized for cargo handling. In addition there are power sockets (220V & 415V) installed on the forward and aft deck to supply reefers or other equipment which needs power. For example they can also be used to support emergency power to platform cranes etc. To be flexible and carry different types of cargo we installed 58 tie down points on deck with a capacity of SWL 0,25t each.



### DANGEROUS GOODS

To be a safe and reliable partner all of our vessels are equipped and certified to transport dangerous goods. This enables us to perform all requested jobs offshore according to latest regulations, without jeopardizing the safety of our passengers and crew.

All information given in this leaflet are based on the actual design/built status and believed to be correct but given without guarantee.